

Health Estates and Biodiversity

The Ecosystem Approach:
Principles and Delivery
Workshop 11 March 2010
Keith Miller



HEALTH ESTATES
creating healing environments

Health Estates and Biodiversity

- Who we are and what we do;
- What we have;
- What we've done;
- What we plan to do;



HEALTH ESTATES

creating healing environments

Who we are and what we do

- A Directorate of Health Estates Investment group within the DHSSPS
- Centre Of Procurement Expertise (COPE);
- Provide specialist advice, support, and executive service in relation to the Health and Social Care and Public Safety estate ;
- Develop and disseminate estate policies, strategies, action plans and guidance;

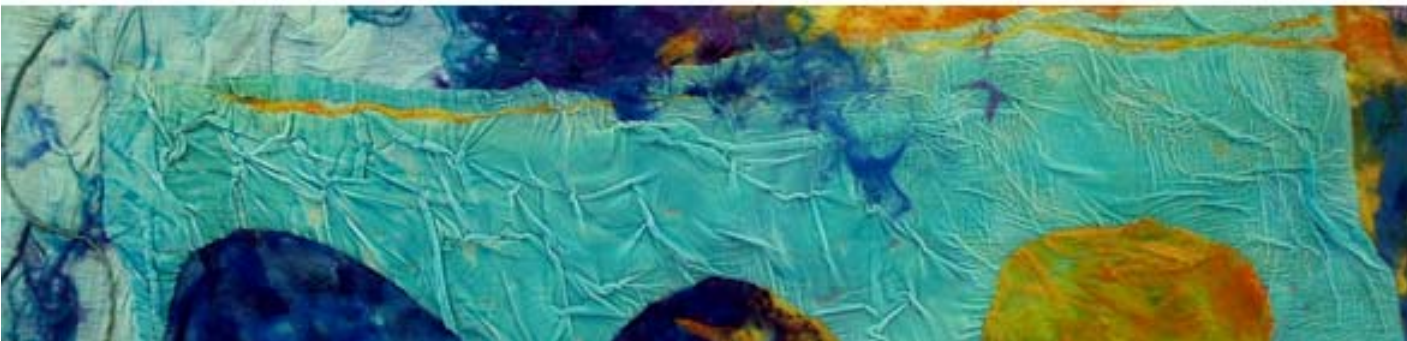


HEALTH ESTATES

creating healing environments

What we have

- Five Health and Social Care Trusts
- One Ambulance Trust
- The Fire and Rescue Service
- Nine Agencies



HEALTH ESTATES

creating healing environments

What we've done

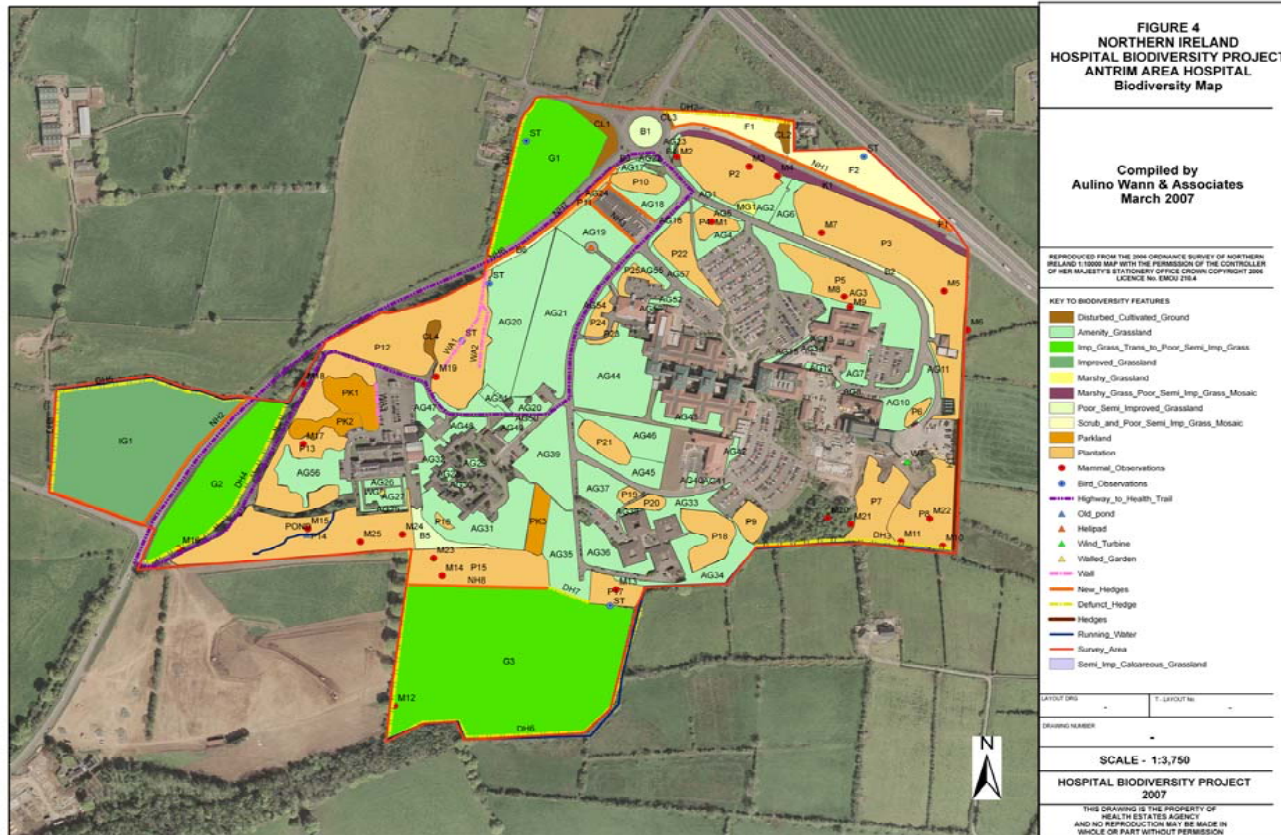
- 2008 base line biodiversity assessment of six large HSC Trust sites:
- Antrim Area , Causeway (Coleraine),
- Gransha (L/Derry), Knockbracken Belfast)
- St Luke's (Armagh), Ulster (Dundonald)



HEALTH ESTATES

creating healing environments

Antrim Hospital



HEALTH ESTATES
creating healing environments

What we've done 2007 -2010 Biodiversity Implementation Plan


- Based on recommendations from the NI Biodiversity Group
- Actions internal to DHSSPS
- Actions external to DHSSPS
- Due for review this year



HEALTH ESTATES
creating healing environments





What we've done

Design Brief and BREEAM





**SUSTAINABLE
DEVELOPMENT
DESIGN BRIEF**

Revision 2



HEALTH ESTATES
creating healing environments



The BREEAM family

The BREEAM family of assessment methods and tools are all designed to help construction professionals understand and mitigate the environmental impacts of the developments they design and build.

BREEAM Buildings and BREEAM Tools act at different stages of the construction process; i.e. for the manufacture of building materials (life cycle analysis of materials in BREEAM Specification: The Green Guide) through design stage (BREEAM Envest and BREEAM Buildings) during construction (BREEAM Smartwaste) and post construction (BREEAM Buildings).

The methods and tools also cover different scales of construction activity. BREEAM Developments is useful at the master planning stage for large development sites like new settlements and communities. BREEAM Buildings assesses the operational and the embodied environmental impacts of individual buildings.

BREEAM Specification and BREEAM LCA look at the environmental impacts of construction materials.

All the BREEAM products are regularly updated to take advantage of new research and technology to reflect changing priorities in regulations and to ensure that BREEAM continues to represent best practice.

© Copyright Building Research Establishment Ltd



HEALTH ESTATES
creating healing environments

Design Brief & BREEAM land use and ecology

Design Brief

- Appoint an ecologist
- Management plan for 1st five years
- Biodiversity champion with design team.

BREEAM

- At least 75% of build is on previously developed land
- Enhance site ecology
- Long term impact



HEALTH ESTATES

creating healing environments

What we've done

Biodiversity Guidance for HSC bodies

- Commissioned Hyder Consulting
- Biodiversity and new build/refurbishment
- Biodiversity and existing estates
- Biodiversity duty
- Partnership working



HEALTH ESTATES

creating healing environments

What we plan to do.

- Monitor HSC Trust projects
- Publish case studies
- Promote partnership working
- Develop more detailed guidance



HEALTH ESTATES

creating healing environments

Thank you

Keith Miller
Health Estates



HEALTH ESTATES
creating healing environments